



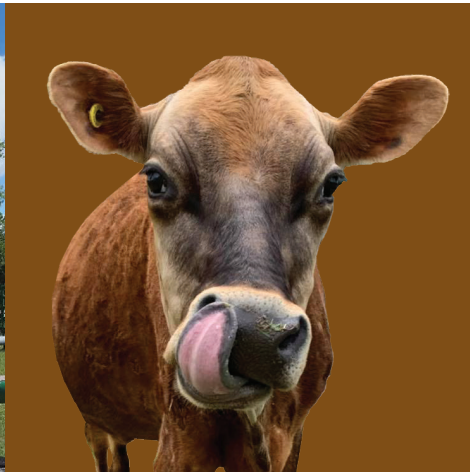
2021 Highlights of the Year

Thank you to all of you for supporting the Farm during another year of this pandemic. We can't thank you enough for your generosity. You supported our programs, our open houses, our virtual gala, our golf tournament, our fundraising campaigns, and our beloved animals.

More importantly, your gift allows us to keep our doors open and continue to provide impactful programs and services to those who need us the most, despite the various lockdowns and setbacks.

Your devotion to WindReach and all that we do is heartwarming.

Read about the impact your dollars make and how you help to improve the lives of so many!



ACRES OF FUN SUMMER CAMP

2021 marked the return of our Acres of Fun summer camp, albeit running a little differently than in previous years. Amidst many new safety protocols, we were able to sell out 5 weeks of camp and re-unite many of our camp veterans with the Farm and their favourite furry and feathered friends. Look for registration information on our 2022 Acres of Fun summer camp early in the new year!



MESSAGE FROM THE EXECUTIVE DIRECTOR, ROSS STE-CROIX

The last couple years have certainly been like no other that any of us have ever seen. However, these tough times have taught us resilience, patience, compassion, and flexibility. It is clearer to us than ever before how important our life-changing programs and services truly are. I am happy to report that we are once again growing. The number of program participants is on the rise and we are confident that participation levels will

return to 2019 levels by mid-2022. We approved a new 3-year strategic plan focused on partnerships and program growth. We made the most of the quieter months and completed the installation of a new accessible playground and outdoor classroom, as well as an 1,800 square foot greenhouse. Finally, our Foundation launched a fundraising campaign to raise the funds to support much-needed capital projects, program growth, and an endowment fund to see us well into the future, one that is looking bright for the Farm!



COMMUNITY PARTICIPATION PROGRAM (CPP)

CPP participants are some of the hardest folks at the Farm. The chores they look after need to get done rain or shine, winter or summer. Boy, did we miss them during lockdowns! Program participation is growing, nearly doubling from September to October alone. We look forward to welcoming back more familiar faces, and hopefully new ones in 2022.

VISITOR PROGRAM

Our visitor programs were quieter in 2021. The day program stayed active, offering smaller group tours, many to families looking for a safe place to enjoy fresh air and meet four-legged friends. We hope to return to large groups taking over the Farm soon. Our overnight program is accepting bookings for both suites for 2022. We expect them to go fast, so contact us ASAP to book your WindReach getaway!

THERAPEUTIC RIDING

Our Therapeutic Riding program saw a passing of the torch in 2021 as our long-time Coordinator of Equine Services, Pat Bullock, handed over the reins (literally) to Marie Akins. Due to COVID-19, the number of rider participants was limited to ensure that we were keeping everyone safe. Now, with our COVID-19 Vaccination Policy in place, we are opening more slots to allow more riders to return in 2022.



HORTICULTURAL THERAPY

Our Horticultural Therapy program was put on hold during the height of COVID-19 as so many of our participants were not able to come to the Farm. We were thrilled to re-launch the program in July with the hiring of a new team to guide its growth into 2022 and beyond. We took advantage of the downtime to erect a new 1,800 square foot greenhouse that will be available for use in 2022.



LEARNING-4-LIFE

This adult day program re-defined creativity during COVID-19. It went virtual, connecting with participants through virtual barn and local attraction visits, art projects, and movie afternoons. Programming is back onsite and at 85% capacity, welcoming many new faces too. In 2022, we will explore expanding to add a second cohort Monday through Friday to reach more adults of all abilities in Durham Region and beyond.



WOOL

The wool program never ceases to amaze. When COVID-19 hit, the staff received personalized homemade masks from our wool program lead, Rosemary Oliver. And the group has continued its work, whether at the Farm or from home. Their demonstration tables and hand-crafted items (all made WindReach sheep wool) have been a visitor destination during special events for the past year and a half.



EVENTS

A big success story for 2020-21 has been the drive-thru events. In Summer 2020, we started offering themed drive-thru events for our participants and local families. It was important to stay connected to the community during COVID, in a safe way. Along the way, we realized how much we loved dressing up and acting out skits, so look for drive-thru events to remain in future years.



NEW AT THE FARM! GREENHOUSE

With the support of the Ontario Trillium Foundation, we completed work on a greenhouse and supporting structures, such as a new well, to support the growth of the horticultural therapy program. The 1,800 square foot space will permit the program to welcome more participants all year long and will be opening to programs in January 2022.

NEW AT THE FARM! NATURAL PLAY & ACTIVITY SPACE

With the support of the Ontario Trillium Foundation, TD Friends of the Environment, the Federal government, and Griffith Property Services, we removed the old playground structure at the Farm and replaced it with an accessible natural playground and outdoor classroom that is sure to be a hit with the summer camp and day visit programs for years to come!



VOLUNTEERS

Dedication is not a strong enough word to describe our volunteers. During lockdowns, we were not able to have any volunteers at the Farm for long periods, but they found ways to continue helping. Whether fostering small animals, or making items to sell at events, they kept WindReach top of mind. We are so happy to have our volunteers back and look forward to welcoming new volunteers in 2022.

MESSAGE FROM CAROL DAHLQUIST, EXECUTIVE DIRECTOR

Fundraising during a pandemic has certainly brought with it its own challenges, but I have to say I was blown away this past year with the amount of support from all of you! You gave with your hearts and it has made a huge difference to the Farm, the participants, and the future of WindReach Farm.

The Foundation Board worked hard in 2021 holding a number of events and campaigns, continually thinking outside the box as we navigated the ever-changing landscape of the pandemic. Whether you donated to our Horseshoes for Hope campaign, the Annual Appeal, a specific program, gave a general donation, or attended one of our events we are so very grateful for your support.

The funds raised by the Foundation support the programs and services offered by the Farm as well as our beloved animals and property. You helped make 2021 the best fundraising year ever and helped the many participants and families by ensuring that WindReach continues to be here for years to come.

"OF COURSE, WE CAN!" CAMPAIGN

This year we began a comprehensive fundraising campaign for programs, capital projects, and an endowment fund that will ensure the longevity and sustainability of the Farm. The legacy that Sandy Mitchell built will continue well into the future, providing impactful programs and services that enrich and improve the quality of life for our participants and their families. Stay tuned for more information on this later in the year and how you can be a part of it.



CHARITY GOLF TOURNAMENT

Our second Annual Golf Tournament was a massive success once again. Enjoyed by over 160 golfers and many sponsors, the day was picture perfect. Glenn Healy was our "Play the Pro" and raised lots of laughs and funds at his assigned hole. Along with the raffle and the support of the golfers and sponsors, we raised over \$55,000 for WindReach Farm. Mark your calendars for this year's tournament date on June 14th at Royal Ashburn Golf Club.

NIGHT AT WINDREACH FARM GALA

Venturing "outside the box" we held our first ever virtual gala, hosted by Bob Baker. The event was a huge success raising over \$50,000 through tickets sales, sponsorship and online auction items. We were entertained by Ben Hudson, Glenn Healy and the Highland Creek Pipe Band. The stars of the evening were our participants' testimonials which you can still view, along with the entire gala, on our website under Events.



AN EVENING FOR WINDREACH

Thinking "outside the box" again, two of our sponsors and friends, Scott Rutledge (Rutledge Jewellers) and Joe Vermulst (Vermulst & Sons) hosted a fabulous dinner at Slabtown Cider & Eatery. With entertainment by Drew Chester, Ben Hudson, Kenneth Welsh and Emcee Glenn Healy, this intimate evening raised over \$50,000. We are so grateful for the support and thoughtfulness of Scott, Joe, and the guests.

Your support impacts, inspires, empowers and changes lives every day. Thank you!

WindReach Farm Foundation

**A centre for inclusion and personal achievement
for people of all abilities**

312 Townline Rd., Ashburn, ON. L0B 1A0 | 905-655-5827 | info@windreachfarm.org
Charitable R.N.: 13454 2497 RR0001 | www.windreachfarm.org

Proud Supporters



**ONTARIO POWER
GENERATION**